



Friends, Learners, Guardians
Whakahoahoa, Akonga, Kaitiaki

Nau mai Haere mai

SCHOOL NEWSLETTER

Friday 16th March 2018



Safety At Our Gates

Please Note Urgently

As of Monday 19th March the Harris Road Driveway into school will be CONED OFF

Morning - from 8.20am - 8.55am

Afternoon - from 2.50pm - 3.15pm

Cars who speed up the driveway at pick up or drop off times are a danger to children.

We are looking after children's safety - please help us!

Important Dates



Mar 20th	HOME SCHOOL CONFERENCES - Bookings Online
Mar 21st	HOME SCHOOL CONFERENCES - Bookings Online
Mar 27th	NZEI Paid Union Meeting - children home at 1pm
Mar 30th	Good Friday - Easter Holiday Break
Apr 2nd	Easter Monday Holiday
Apr 3rd	Easter Tuesday Holiday
Apr 4th	LIFE EDUCATION BEGINS for Years 3 - 6 students
Apr 13th	END OF TERM ONE

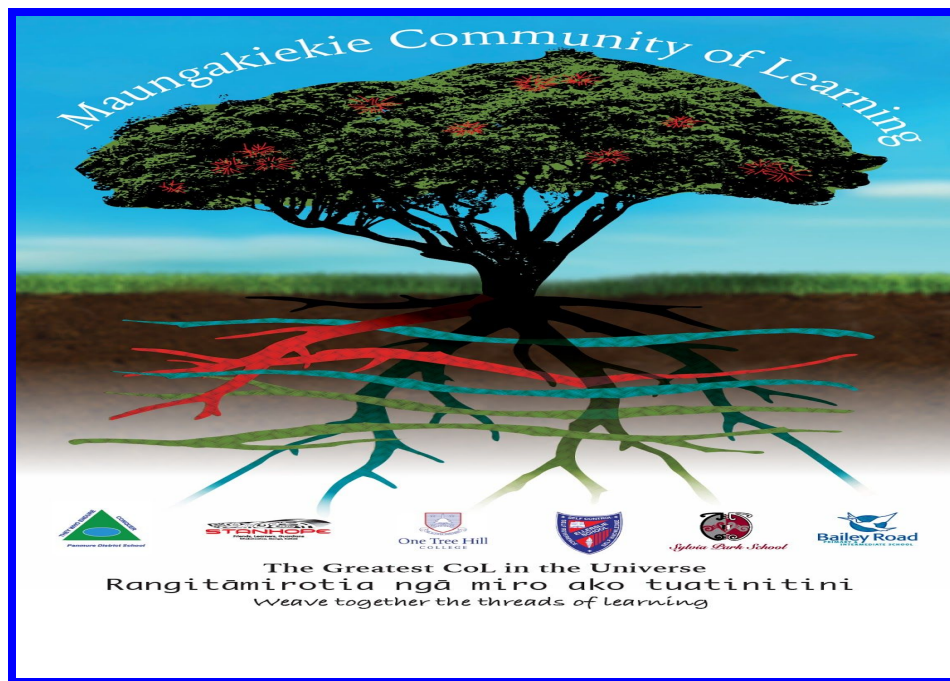
Community Corner

- Thank you to Susan Hall who is working behind the scenes to add her expertise to our gardens and environment programmes. We are keen to progress the landscaping (as funds allow!) of our school and Susan has agreed to help us achieve some new developments.
- The Community Fitness Trail project is beginning at last. We have funds raised from our FUN RUNs and now can start the project. The wooden fort playground is still 'out of bounds' as we have had difficulty finding building contractors who are free to complete the Repairs necessary for it to reach safety standards - we are all GO now

NZEI PAID UNION MEETINGS FOR TEACHERS

27th March 1pm - 3pm

Please could parents pick up children by
1pm on that day if at all possible as
teachers have to attend the union meeting



Maungakiekie Kāhui Ako (Community of Learners)

→ Stanhope Road School is part of the Maungakiekie Kāhui Ako also known as Community of Learners.

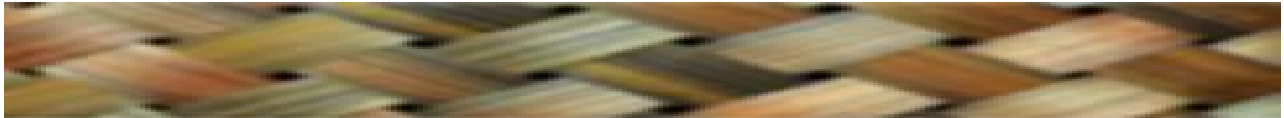
→ We work alongside One Tree Hill College; Sylvia Park School; Ellerslie School; Panmure District School and Bailey Road School.

- We have a Term Calendar where we meet regularly to progress across-school goals and action plans.
- The Management Team consists of the six Principals; the four Across School Mentors and the Expert Partner Kate Birch

Our Kāhui Ako has a
Whakatāukī that we live by....

‘Rangitāmirotia ngā miro ako tuatinitini.’

Weave together the threads of learning



This whakatāukī illustrates the interconnected relationship of the six schools. We rely on one another to meet our achievement challenges. The woven imagery demonstrates the threads of learning for teachers, support staff, students, whānau and the wider community.

We will weave together emerging, innovative ideas to find solutions for our students in expectation of contributing strongly to the solutions for other learners in Aotearoa New Zealand

We will report the updates for the Kāhui Ako in each newsletter in 2018. Our aim is that our whānau and families at our school will get to know that Maungakiekie Community of Learners is working on behalf of our school and wider community to progress the learning of ALL students Years 1 - 13 and beyond into the workforce.

Contact Stanhope Road School

Phone: (09) 579 6434

Email: office@stanhope.school.nz

Website: www.stanhope.school.nz

Address: 2B Harris Road,
Mount Wellington,
Auckland



Find us on Facebook!

'Stanhope Road School'