



# Papakowhai School

Learning Together



Spey Place, Papakowhai, Porirua 5024  
Phone: 233 8321 Fax: 233 9403 Email: office@papakowhai.school.nz  
Web: www.papakowhai.school.nz

## PAPAKOWHAI SCHOOL NEWSLETTER

Week 4 ● Term 3 ● 14 August 2019

Dear Parents/Caregivers

### **NEW ENROLMENTS FOR 2020**

To assist with planning for 2020 we need to check we have an accurate list of enrolments for next year.

**If you fall into one of following categories, please contact the Office by Friday August 30<sup>th</sup>:**

- i) You live in zone and have a new entrant child who turns 5 in 2020 and you have not already given pre-enrolment details to the Office.
- ii) You live in zone and currently have a child attending a different school that you intend to enrol at Papakowhai in 2020.

If you have a friend or family member that does not have a child currently attending Papakowhai School and you think that they may fall into one of the above categories, please get them to contact the Office also.

**If you fall into one of following categories, please contact me directly, before August 30<sup>th</sup>:**

- i) You currently live out of zone, have children already attending Papakowhai School, you have a new entrant child who turns 5 in 2020 and you have not already completed an enrolment form for 2020.
- ii) You have a child currently attending Papakowhai School and you are planning to enrol them at a different school in 2020.

### **Out of Zone Places for 2020**

**If you are unclear about the boundaries of the school zone, please refer to our website. Please note all streets that are part of the “grandparenting clause” are counted as in –zone enrolments.**

The number of out of zone places for 2020 for Year 1 siblings of current pupils will be determined by the Board of Trustees.

There will be no places for children who do not have a current sibling at school.

The process for this is as follows:

- Pre-enrolment of out of zone Year 1 children who have a sibling currently attending Papakowhai School will need to be received by August 30<sup>th</sup>, 2019.
- The BOT will determine from the pre-enrolments how many places are likely to be available in 2020 for out of zone Year 1 siblings of current students at the September meeting.
- The BOT will advertise the number of out of zone places at the start of Term 4.
- A ballot, if required, will take place before the end of October.

If you have any questions or concerns about your child's eligibility to enrol at Papakowhai School in 2020 please contact me.

Mark Smith

Principal

[mark@papakowhai.school.nz](mailto:mark@papakowhai.school.nz)

## **POWHIRI**

We are holding a powhiri **tomorrow at 9am**, to welcome our newest students and their families to Papakowhai School. If you are part of the group being welcomed, please take your children to class first so that they can drop their bags and let their teachers know that they are here before heading to the **staffroom**. At approximately 9.15 you will be guided over to the hall for the powhiri and will be welcomed back to the staffroom for light refreshments afterwards.

## 2020 TERM DATES

Please see the end of this newsletter for a full list of term dates and holidays for 2020.

## SCHOOL ASSEMBLY

Our next school assembly will take place on Tuesday, 20 August, at 10 am in the school hall. Classes sharing their work will be Rata Toru, Matai Toru, Rimu Tahī, Totara Tahī and Kauri Rua. Please come along and see what they have been doing.

## HOME AND SCHOOL COMMITTEE

**Hoodie and hat orders** These are optional, not a school requirement, but an awesome way to show school pride. **Hoodies** - the Papakowhai School hoodie is available to order @ \$55. **Orders close this week, on Friday 16 August.** **Hats** are also available to purchase directly from the office and cost \$22. They are available in navy or yellow.



**Quiz** - Don't forget the quiz night is this Saturday at 7pm in the school hall. There's still time to buy a ticket if you want to come and join the fun. Tickets available on Kindo [https://shop.tgcl.co.nz/shop/index.html?fbclid=IwAR2DhXgWoowmMzQ98KjtGmKc90J2uc\\_MmMcHn1gTIP8meaSZfs6Eq0pmCz8](https://shop.tgcl.co.nz/shop/index.html?fbclid=IwAR2DhXgWoowmMzQ98KjtGmKc90J2uc_MmMcHn1gTIP8meaSZfs6Eq0pmCz8)

**Calendar Art** - The children have been busy creating wonderful artworks that can be printed on calendars, diaries, cards, mousepads and notebooks. Each child's artwork will be viewable via the Seesaw app.

Orders need to be in by Friday of Week 7 (6<sup>th</sup> September). Prices this year are Calendars \$15, Diaries \$18, Notebooks \$15, Mouse pads \$16 and Cards \$13.

You will be able to place the orders through the Kindo online payment system:

[https://shop.tgcl.co.nz/shop/index.html?fbclid=IwAR2DhXgWoowmMzQ98KjtGmKc90J2uc\\_MmMcHn1gTIP8meaSZfs6Eq0pmCz8](https://shop.tgcl.co.nz/shop/index.html?fbclid=IwAR2DhXgWoowmMzQ98KjtGmKc90J2uc_MmMcHn1gTIP8meaSZfs6Eq0pmCz8)

## SOCIAL SKILLS - PROBLEM-SOLVING

At school, our social skills focus is solving problems for ourselves.

Problem-solving skills include the ability to decide what to do when faced with a problem. To ensure a positive outcome, children need to have some strategies to achieve this. Understanding the process of problem-solving is more important than being given a solution, because children can learn to use this strategy, not only in the immediate situation, but in many others.

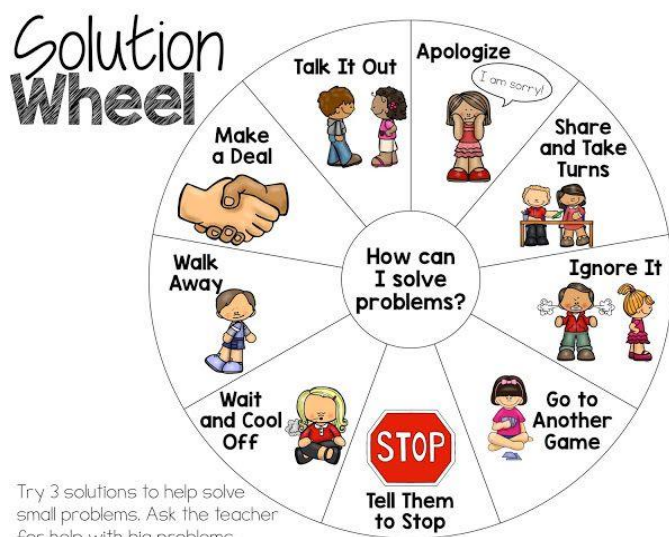
A good approach to teach children is to **Stop, Think, Choose and Think Again.**

This approach helps children to think through their possible reactions to situations.

1. Tell yourself to **stop**. Don't do anything.
  2. **Think** to yourself to calm down and sort out what is going on. What is the problem? Think about different ways to handle it.
  3. After thinking about the different things you could do, **choose** the one that has the best reasons to sort it out. After you have followed your choice, **think again**. Is the plan working? If not, try another choice.
- (Excerpt from Dr Mac's book: The Behaviour Survival Guide for Kids)

When problem-solving at home, you can help your child consider various solutions to solve a situation. By developing these important strategies, your children are learning an important life-long skill by handling difficult situations independently.

Lesley Hodge  
Assistant Principal



## **SCHOOL MAGAZINE**

Earlier this year we advised that the end of year school magazines would cost \$10 each and it is optional whether you wish to purchase this. We placed this optional fee on our student management system and it shows on the statements of account. If you do not want this showing on your statement it can be easily removed if you let the office know.

The number of magazines to be published will be set early in Term 4 so, if you do want to receive a magazine at the end of the year, it needs to be paid for as soon as possible as we won't be keeping a stock of them at the office.

## **WASTE FREE WITH KATE**

Kate Meads is a waste educator and inspirational speaker who is coming to Porirua this October to present her Waste Free Living Workshop.

Attendees get a gift pack with their ticket, that is worth \$100 and is full of waste minimisation products like reusable straws, food pouches and wraps, and more.

Porirua Waste Free Living Workshop, Te Rauparaha Arena,  
17 Parumoana St, Porirua - Mana, Friday 11th October,  
6:00pm – 8:30pm

\$25 tickets and attendees get a gift pack worth \$100!

Booking page: <https://www.eventfinda.co.nz/2019/waste-free-living-workshop-with-kate-meads2/porirua-mana>

Facebook event

<https://www.facebook.com/events/2302315310001937/>

## SOME IMPORTANT DATES

### AUGUST

<b>Thursday 15</b>	Powhiri for new families, 9.00 am
<b>Thursday 15</b>	Boostrix vaccinations (Year 7)
<b>Monday 19</b>	Kauri 1&2 field trip to Battle Hill
<b>Tuesday 20</b>	Assembly, 10am, school hall
<b>Tuesday 27</b>	BOT meeting, 7pm, staffroom

### SEPTEMBER

<b>Thursday 5</b>	Parumoana swim sports, Yrs 5&6
<b>Friday 6</b>	Parumoana swim sports, Yrs 7&8
<b>Wednesday 18</b>	Artsplash Choir/Wearable Arts performance Michael Fowler Centre
<b>Thursday 19</b>	Artsplash Dance performance, Michael Fowler Centre

### TERM DATES FOR 2020

<b>TERM</b>	<b>START</b>	<b>FINISH</b>	<b>PUBLIC HOLIDAYS</b>
<b>1</b>	Monday 3 February	Thursday 9 April	Waitangi Day, 6 <sup>th</sup> February School holidays include Easter and ANZAC day, 27 <sup>th</sup> April
<b>2</b>	<b>Tuesday 28 April</b>	Friday 3 July	Queen's birthday, 1 <sup>st</sup> June
<b>3</b>	Monday 20 July	Friday 25 September	
<b>4</b>	Monday 12 October	Tuesday 15 December	Labour Day, 26 <sup>th</sup> October

Teacher Only Days (Part of 8 agreed by the MOE in the Teacher Collective Agreement) in Term 2 and 4: to be confirmed.

**Week prior to school starting:** Office opens Monday 27 January