



Papakōwhai School

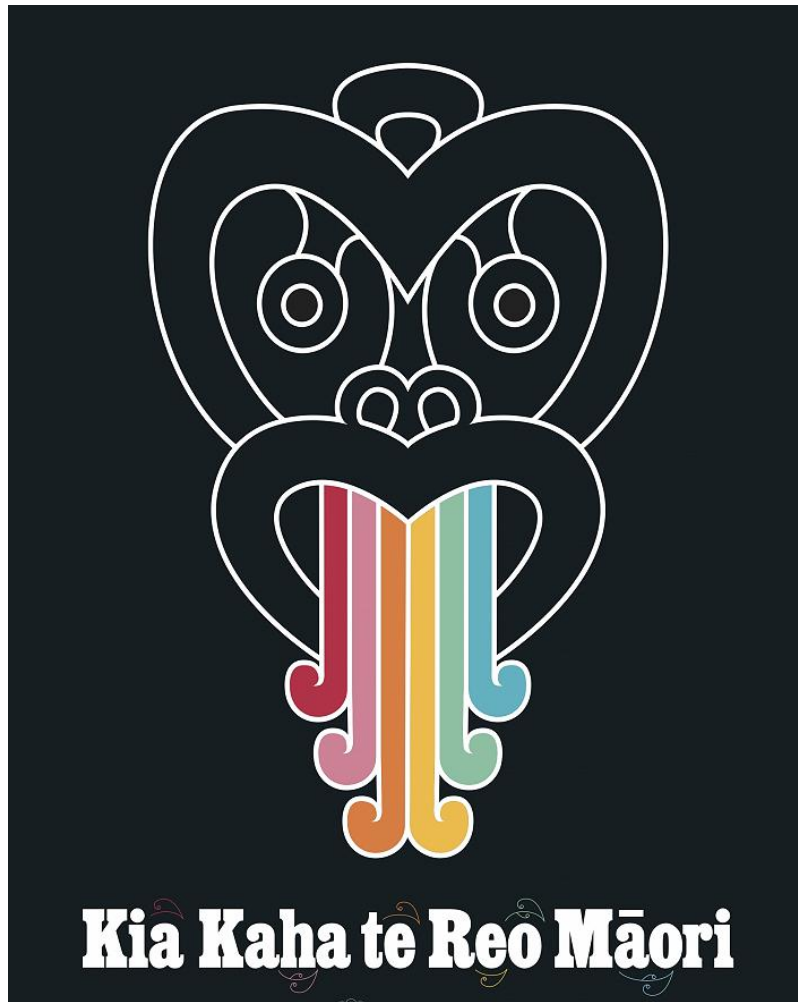
Growing Together – Igniting Potential



17 Spey Place, Papakōwhai, Porirua, 5024
Phone: 04 233 8321 Email: office@papakowhai.school.nz
www.papakowhai.school.nz

Papakōwhai Pānui

Wiki 8 | 15 Mahuru 2021 | 15 September 2021



Kia ora koutou

We have been having an awesome time celebrating Māori Language week at school. Kapa haka have made some awesome videos and our kaitiaki (senior student leaders) have been running workshops in different classrooms. Classes participated in the Māori Language moment at noon yesterday with great enthusiasm. Ka mau te wehi!

ENROLMENTS FOR 2022

Out of Zone Places

If you currently live out of zone, have children already attending Papakōwhai School, you have a new entrant child who turns 5 in 2022 and you have not already completed an enrolment form for 2022 please contact me by Friday 1 October at the latest.

The number of out of zone places for 2022 for Year 1 siblings of current pupils will be determined by the Board of Trustees.

The process is as follows:

- Pre-enrolment of out of zone Year 1 children who have a sibling currently attending Papakōwhai School will need to be received by October 1st, 2021.
- The BOT will determine from the pre-enrolments how many places are likely to be available in 2022 for out of zone Year 1 siblings of current students at the October 26th meeting.
- The BOT will advise the number of out of zone places and a ballot, if required, will take place before the end of October.

There will be no places for children who do not have a current sibling at school.

In Zone Places

To assist with planning for 2022 we need to check we have an accurate list of enrolments for next year.

If you fall into one of following categories, please contact the Office by Friday October 1st:

- i) You live in zone and have a new entrant child who turns 5 in 2022 and you have not already given pre-enrolment details to the Office.
- ii) You live in zone and currently have a child attending a different school that you intend to enrol at Papakōwhai in 2022.

If you have a friend or family member that does not have a child currently attending Papakōwhai School and you think that they may fall into one of the above categories, please get them to contact the Office also.

Leavers

If you have a Year 1 - 7 child currently attending Papakōwhai School and you are planning to enrol them at a different school in 2022 please notify the principal by October 1st.

If you are unclear about the boundaries of the school zone, please refer to our website. Please note all streets that are part of the “grandparenting clause” are counted as in–zone enrolments. If you have any questions or concerns about your child’s eligibility to enrol at Papakōwhai School in 2022 please contact me.

Ngā mihi
Mark Smith
Principal
mark@papakowhai.school.nz

HEALTH CONSULTATION

We invite you to have a read of our [Health & Physical Education Curriculum](#). It also contains links to specific programmes we teach in our school.

Please note that we are teaching our Sexuality Education programme in Years 1 - 8 at the start of Term 4.

Links to unit plans	Resources referenced in the materials
Kauri - Kauri Sexuality Education unit plan Totara - Totara Sexuality Education unit plan	Kauri - Sexuality education resources levels 3 & 4 Totara - Sexuality education resources levels 3 & 4
Rimu - Rimu Sexuality Education unit plan Matai - Matai Sexuality Education unit plan Rata - Rata Sexuality Education unit plan	Rimu - Sexuality education resources levels 1–2 Matai - Sexuality education resources levels 1–2 Rata - Sexuality education resources levels 1–2

If you would like to give feedback on this programme or any other part of the document, please complete the [Feedback Form](#) or contact me directly.

If you have specific lessons in the Sexuality Education programme that you do not want your child to participate in please contact Mark directly.

TEACHER ONLY DAYS FOR THE REST OF YEAR

The Teacher Only Day scheduled for September 20 has been cancelled. There will not be a Teacher Only Day in Term 3 due to the Covid lockdown.

There will be two teacher only days in Term 4:

Tuesday 26th October (Tuesday following Labour Weekend) and Monday 15th November.

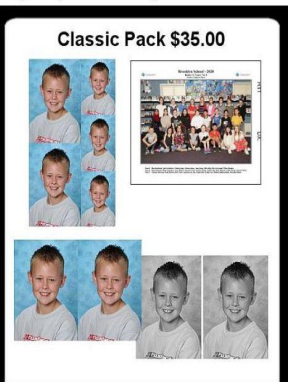



RATA CLASSES AND TEAM PHOTOGRAPHS

Students in Rata will bring home a sibling/family photo order form next week. This needs to be completed and returned to the office before Thursday 30th September for the family photo to be taken.

Papakowhai School Rata Classes & Teams on 30th September, 2021

We will photograph portraits of all students as well as class photos.

You do not order/pay for your child's portraits or class photos until AFTER PHOTODAY.
You will receive an order form featuring a photo of your child after photoday. (Packs available below)

<p>Premier Pack \$40.00</p> 	<p>Classic Pack \$35.00</p>  <p>Packs include:</p> <ul style="list-style-type: none"><input type="checkbox"/> Pack A: 10x8, 2x 5x7, Postcards, Wallets, Calendar and Class<input type="checkbox"/> Pack B: 2x 5x7, Postcards, Wallets, and Class<input type="checkbox"/> Pack C: 1x 5x7 and Class<input type="checkbox"/> Pack D: 2x 5x7, Postcards, Wallets, but no Class<input type="checkbox"/> Pack E: Class only <p style="font-size: small;">Complimentary Packs A-D include portrait file voucher. Email the code on the included voucher to us, and we send the file by return. A, B & D include complimentary B&W 5x7's.</p>	<p>Single Pack \$30.00</p>  <p>Portraits Only \$20.00</p>  <p>Class Only \$16.00</p> 
---	--	--

Family/Sibling Photos: Order form is on reverse of advice note which your child will bring home. Order form **MUST** be returned to school office before photoday for photo to be taken.

SCHOLASTIC LUCKY BOOK CLUB ORDER

The Scholastic warehouse is in Auckland and our orders hadn't left the warehouse prior to the start of the Level 4 lockdown. This means that the order can't be sent until they are in Level 3. There will be a big backlog of orders once Level 3 is reached so we thank everyone for their patience.

HOME AND SCHOOL COMMITTEE

Thank you to everyone who placed an order for Calendar Art. With Auckland in Level 4 lockdown, we are expecting a delay in receiving the completed calendar art orders back. If you missed out on getting your order in the first time round, we have opened it up again in Kindo, (kindo.co.nz) Place your order now - closes Friday 1 October.



Wednesday , 22 September, 7pm, Rata block Come along to a free talk about Psychological Wellbeing and Stress, presented by Dr Kirsty Everett, Clinical Psychologist. Kirsty will cover tips and strategies for reducing stress and improving wellbeing. This is a free event but please register on Kindo (kindo.co.nz) to secure your place.

Save the date - Quiz Night is coming on Saturday 6th November
More information to follow soon so keep an eye out. Teams of 8 people so start getting your team sorted now!

WACKY WIG WEDNESDAY 29 SEPTEMBER

It's that time again, when we get out our wigs or style a funky wacky hairdo in support of The Child Cancer Foundation!

This year we are holding Wacky Wig Wednesday on the 29th of September to show our support for all those kiwi kids living with cancer. We are asking students to dress up in their wackiest wig or style their hair with feathers, bows and hairspray. We would love for you to bring a koha or gold coin donation to your class to show arohanui to the Child Cancer Foundation.

PEST CONTROL AT COLONIAL KNOB

As part of pest control operations to protect native forest, possum and rat control is planned within Rangituhi / Colonial Knob Scenic Reserve throughout September and October this year. Bait will be placed in bait stations that are secured to trees at chest height during late September 2021. The poison being used is toxic to humans and domestic animals, especially dogs. Warning signs will be placed at the entrance to the covenant.

GIRLS CRICKET FUN DAY AT PORIRUA CITY JUNIOR CRICKET CLUB! If you enjoyed Yeah Girls last year, or just want to see if cricket is for you, then head along and meet the premier girls and women players and have a go in the nets. Bring a friend to the Mana Indoor nets on Saturday 18 September between 11am and 1pm; all gear provided. Registrations for girls and boys are open now. For more information email Porirua City Junior Cricket Club PCJCClub@gmail.com. Covid Level 2 protocols are in place.

HOLIDAY PROGRAMME

Spring Holiday Programme @ Adventure School, 4 – 15 October

BOOKINGS ARE OPEN! 2 weeks of popular and exciting activities await your child (e.g. Trip to Staglands, Trampoline Park, Laserforce, Roller Skating Rink, Movies @ Lighthouse Cinema and much more). Strict Covid19 health & safety guidelines are followed.

BOOK ONLINE: www.asfc.co.nz or for more information e-mail holprog@asfc.co.nz or call 027-454-6975. Opening times are 7.30 am – 5/5.30pm. We are approved for Oscar subsidies!

SOME IMPORTANT DATES

SEPTEMBER

Monday 13	Te wiki o te reo Maori - Maori language week
Wednesday 22	Psychological wellbeing and stress talk. 7pm in Rata block
Friday 24	Papakōwhai School netball prizegiving evening
Wednesday 29	Wacky Wig Wednesday fundraising for Child Cancer Foundation
Thursday 30	Rata classes, Year 8 and team photos

OCTOBER

Friday 1	Last day of Term 3
Monday 18	First day of Term 4
Friday 22	Parumoana Swim Sports
Monday 25	Labour Day holiday - school closed
Tuesday 26	Teacher Only Day
Wednesday 27	Dental van arrives at school until early December